

ArcGIS 10.4.1

Installation Guide



ArcGIS for Desktop
ArcGIS for Server
Portal for ArcGIS

ArcGIS for Desktop Installation

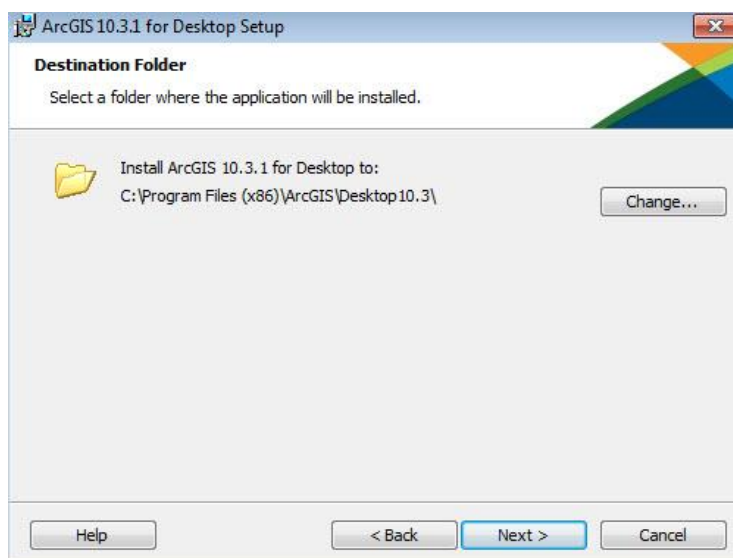
ArcGIS for Desktop is available as Basic, Standard, or Advanced and all the downloads from My Esri. To install a component, sign into My Esri and click the download link on the site. This link will download a self-extracting executable file for installation. After the download completes, you have the option of starting the setup immediately or running it manually. To run the setup manually, browse to the downloaded folder containing the setup and run setup.exe.

How to prepare to install ArcGIS for Desktop

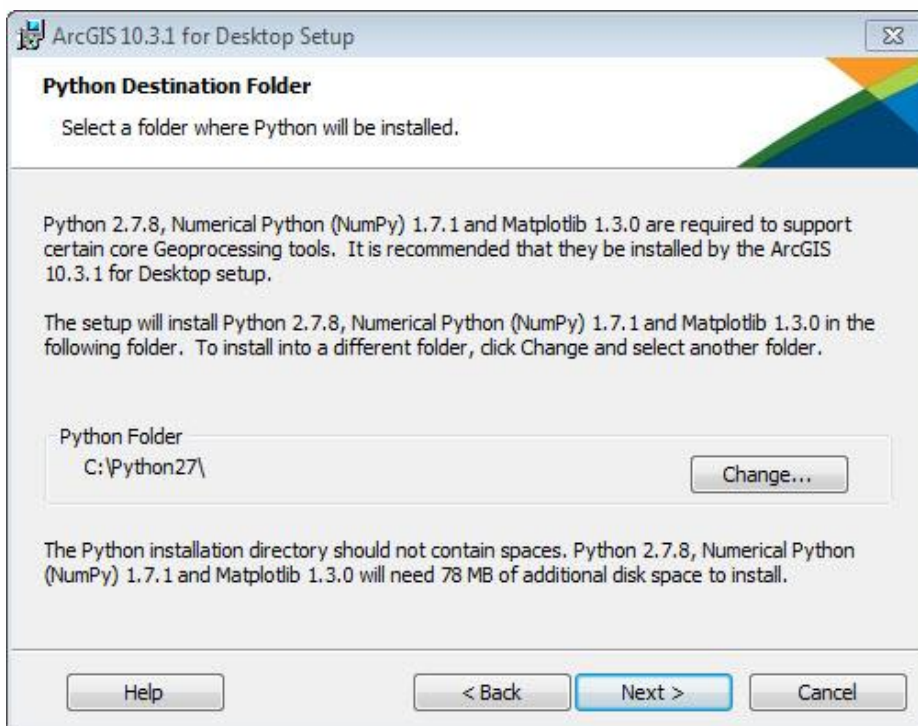
1. Verify that your computer meets the [system requirements](#).
2. Navigate to the contents of the disc in the CD-ROM and double-click on Desktop Setup/Icon to extract to a folder of your choice or let it default to My Documents.

How to install ArcGIS for Desktop

3. One the extraction is complete to allow Auto-Run of ArcGIS for Desktop setup.exe files to installation/run.
4. Accept the License Agreement option to continue
5. The setup program provides an option for a Complete installation, which installs the applications, style files, templates, and optionally licensed extensions. The Custom installation option allows you to choose specific installation



6. The installation location will be identified in this dialog box or in the custom dialog box, if a custom option was selected. An upgrade will not allow you to select or change the installation location. The parent location of an upgrade installation is retained and the software is installed to <parent folder>\Desktop10.3. For example, if ArcGIS 10.2 for Desktop was installed to D:\MyGIS\ArcGIS\Desktop10.2, the 10.3.1 installation folder will be D:\MyGIS\ArcGIS\Desktop10.3. If you need to install to a different location, manually remove your existing installation before starting the 10.3.1 installation.
7. If Python is selected for installation, you must choose the installation location or select the default. The previous Python installation location will also be retained during the upgrade. See [Python requirements](#) for more information



8. When the setup is complete the ArcGIS Administrator Wizard is displayed, allowing you to configure a Concurrent or Single Use authorization. Refer to The ArcGIS Administrator for details

Upon opening the Software Authorization Wizard, you will be provided with three authorization options:

1. I have installed my software and need to authorize it.

Select this option to proceed with the authorization process by entering the authorization code you received from Esri Customer Service.

2. I have already authorized the software and need to authorize additional extensions.

This option is used if you have already authorized the core ArcGIS for Desktop and now want to authorize any extensions. Authorizing additional extensions acquired after authorizing core ArcGIS for Desktop can be done by starting ArcGIS Administrator from Start > All Programs > ArcGIS. Once in the ArcGIS Administrator utility, select the Desktop folder and select Authorize Now.

3. I have received an authorization file from Esri and am now ready to finish the authorization process.

Select this option if you have a provisioning file created from the Esri Customer Care portal. Select the appropriate option and click Next.

Here you have the options to select online or offline methods of authorization, or authorize your Single Use product from a local license server.

4. Provide your contact information and details in the next two dialog boxes. If you are using a provisioning file (online authorization only), this information will be automatically populated from the file.

5. Enter your ArcGIS for Desktop authorization code starting with ESU or EVA, followed by nine digits.

6. Next, you will have the option to authorize any extensions.

If you choose to authorize any extensions, the Software Authorization Wizard will prompt you to enter the authorization codes for the extensions. If you choose not to authorize, the Software Authorization Wizard provides the option to evaluate any extension in the next step.

Optional

In this step, you may choose to evaluate any extensions for which you have not provided an authorization code in the previous step.

Use the online authorization and click Next to connect to the Esri Activation Site. *Upon completion, you will receive a message that authorization is successful and the applications will be ready for use.*

Offline authorization

The remaining steps are applicable only to offline authorization.

1. You will be requested to save your authorization information to disk as a file named authorize.txt. You can then upload the authorization text file or send an email with the file attached.
2. If uploading the text file, an authorization response file will be generated to download.

When sending an email with the text file attached, you will receive a return email from Esri with the authorization response file.

3. After receiving the response file, start ArcGIS Administrator from Start > All Programs > ArcGIS to complete the authorization process.
4. In the ArcGIS Administrator, click the Desktop folder, select the appropriate Single Use product, and click Authorize Now.
5. Select I have received an authorization file from Esri and browse to the (*.respc) file. Click Next so the applications will be authorized and ready for use.

Additional information on Desktop

Single-use license

For single use, authorization is required for each machine. Once the ArcGIS for Desktop installation is complete, you will be provided with the opportunity to authorize your single-use product. You will need the authorization codes sent from Esri Customer Service to the contact email address referenced in the sales order during the authorization process.

This email includes the authorization codes issued for each license in the order. In addition to finding the information in the email, if you already have an Esri Global Account, you can log in to the Esri Customer Care site, click on Authorization & Provisioning, then click on a product name to obtain its authorization code. If you do not yet have an Esri Global Account, you can create one at My Esri.

You will receive an email confirmation and have access to Authorization & Provisioning on the Customer Care site. For ArcGIS for Desktop Single Use, the authorization code starts with the letters ESU or EVA, followed by nine numeric digits, for example, ESU123456789. Follow these steps to complete the Single Use product authorization.

(Contact information can be found at <http://www.esri.com/about-esri/contact>.)

Once the Desktop has been installed then you will need to open ArcGIS Administrator (Start---All Programs---ArcGIS).

1. Select one of the three Single Use products.
2. Click Authorize Now to launch the Software Authorization Wizard. The wizard will walk you through the online or offline authorization process.

Online authorization

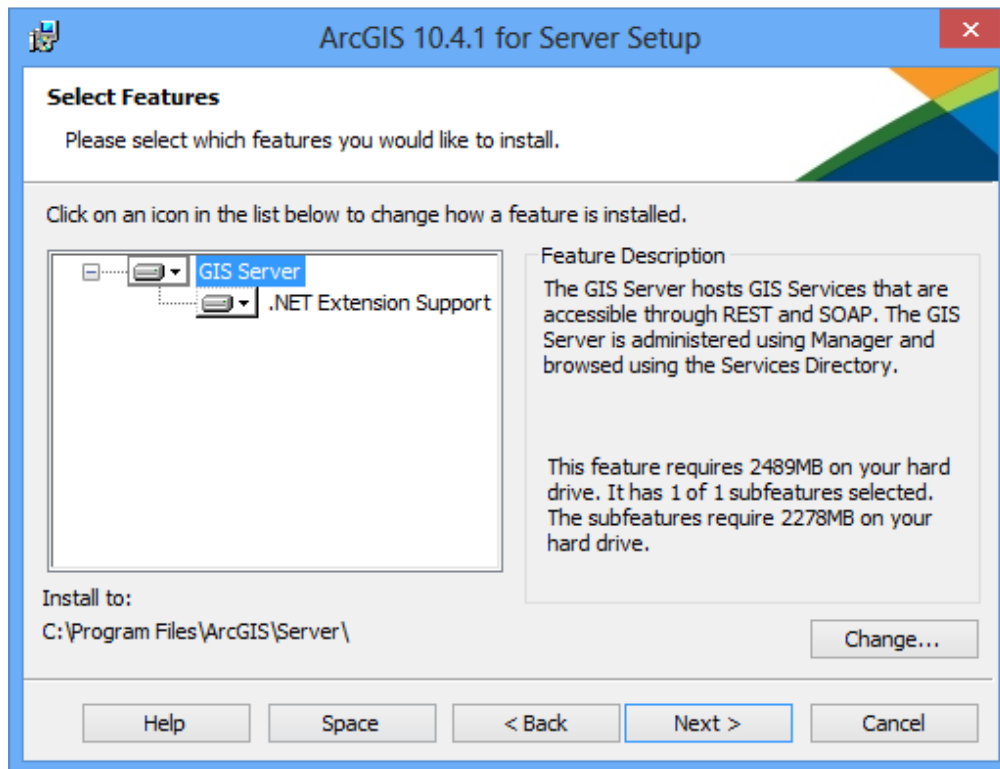
With online authorization, the Software Authorization Wizard connects directly to the Esri authorization site using secure sockets layer (SSL) from the deployed machine. Online authorization can be used if the machine on which the software has been installed is connected to the Internet and can connect to <https://service.esri.com>. Online authorization can be performed by directly entering the authorization code in the Software Authorization by creating a provisioning file (.prvc) at My Esri.

Offline authorization

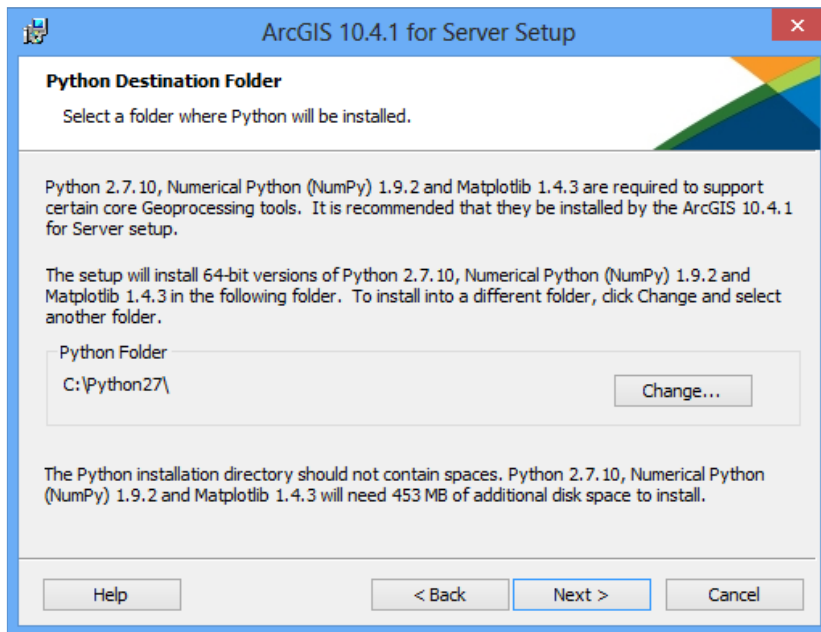
Offline authorization is used if the machine where ArcGIS for Desktop is installed does not have Internet connectivity. In this case, the authorization process creates a text file which can be uploaded to the Esri authorization server from an Internet-connected machine or can be sent in an email to Esri Customer Service to obtain an authorization response file (.respc). This authorization response file can be copied to the machine where ArcGIS for Desktop is installed and used to authorize ArcGIS for Desktop without a direct Internet connection.

ArcGIS for Server Installation

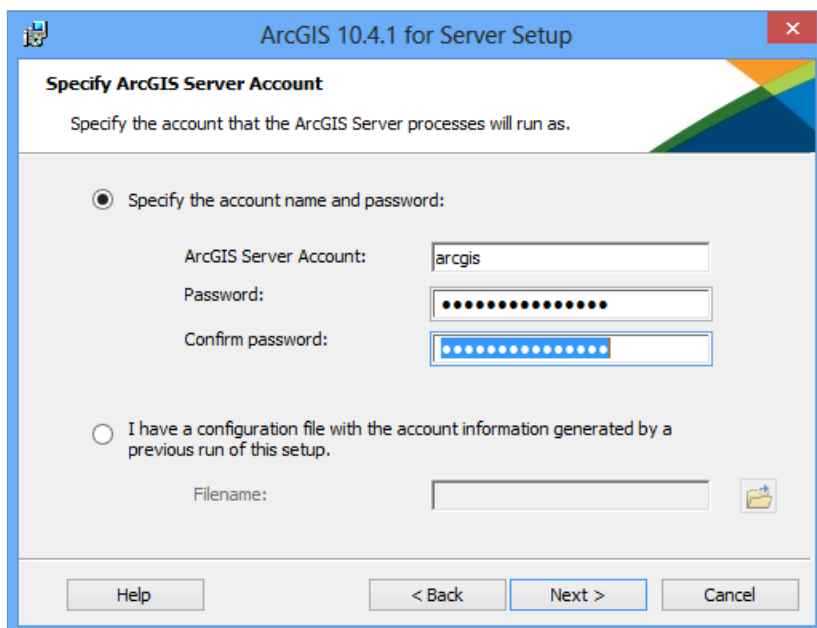
1. The setup program should launch automatically after the download has completed. If the setup program does not launch automatically, browse to the location of the downloaded setup files and double-click Setup.exe.
2. During the installation, read the license agreement and accept it, or exit if you do not agree with the terms.
3. The setup program displays the features that will be installed, click Next



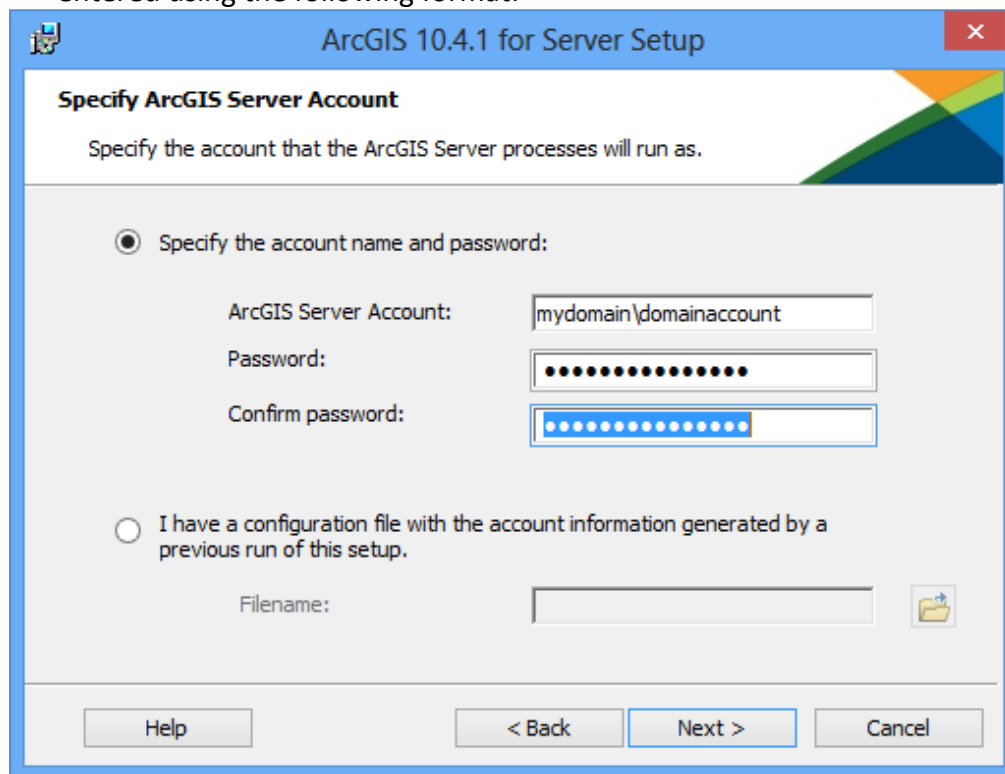
4. If Python 2.7.10 or Numerical Python 1.9.2 is not installed on your machine, the setup automatically installs them for you. The default installation location is C:\Python27\.



5. Specify the account to be used by ArcGIS Server to perform a variety of functions in support of the geographic information system (GIS) Server. The first option **Specify the account name and password**



6. If you enter a **domain account**, it must already exist on the domain and must be entered using the following format:



From here ArcGIS server will be installed following the directions on the screen.

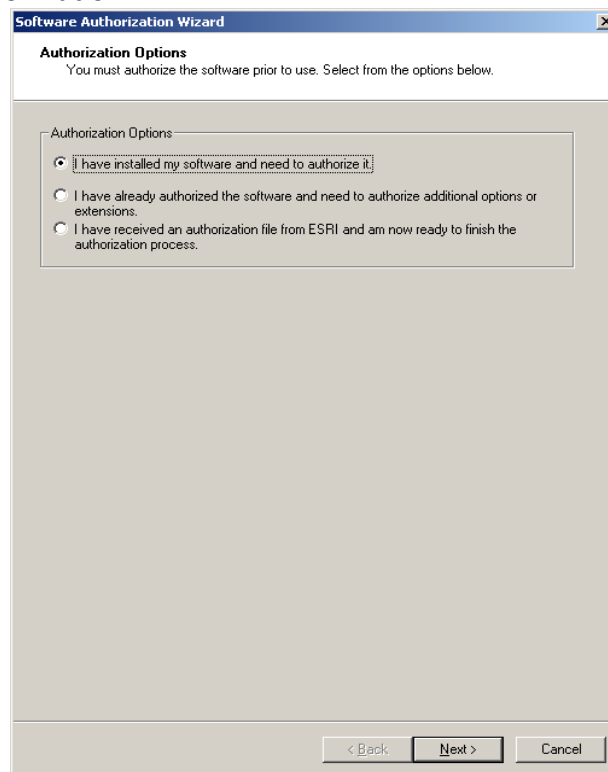
After the installation completes, the **Software Authorization Wizard** is launched. To launch **Software Authorization Wizard** at a later stage Click **Start > Program Files > ArcGIS > Software Authorization**.

To successfully authorize your ArcGIS for Server installation, do the following:

Choose your authorization option

There are three authorization options:

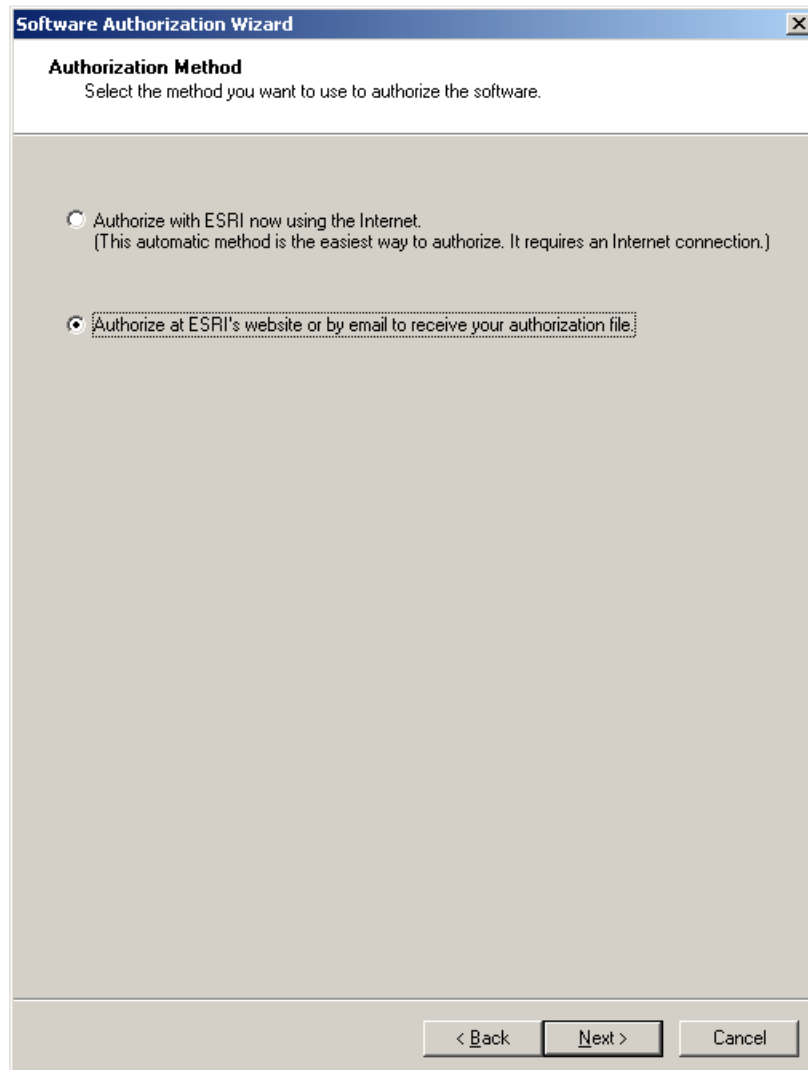
1. I have installed my software and need to authorize it: Select this option if you do not already have an authorization file. There are two methods to provide your authorization information:
2. I have already authorized the software and need to authorize additional options or extensions: Select this option if you've already authorized ArcGIS for Server for use, but you want to authorize additional options or extensions (if available). There are two methods to provide your authorization information:
3. **I have received an authorization file from Esri and am now ready to finish the registration process:** Select this option if you've already received your authorization file from Esri Customer Service. If you select this option, you can either browse to the location of the file (if you received the file by email) or manually enter the authorization information.



Authorization Method:

Authorize with Esri now using the Internet enables you to receive the authorization file immediately. It requires an Internet connection.

Authorize at ESRI's website or by email to receive your authorization file: Methods allows user to create a text file which can be sent to authorize@esri.com or support@esri-southafrica.com to receive authorization file.



The image shows a screenshot of a software dialog box titled "Software Authorization Wizard". The dialog has a title bar with a close button (X) in the top right corner. Below the title bar, the text "Authorization Method" is displayed in bold, followed by the instruction "Select the method you want to use to authorize the software." There are two radio button options: the first is "Authorize with ESRI now using the Internet. (This automatic method is the easiest way to authorize. It requires an Internet connection.)" and the second is "Authorize at ESRI's website or by email to receive your authorization file." The second option is selected. At the bottom of the dialog, there are three buttons: "< Back", "Next >", and "Cancel".

After completing authorization, ArcGIS Server Manager should already be open. You can now log in to Manager and create a new site. The URL to open Manager in a browser is <http://gisserver.domain.com:6080/arcgis/manager>

1. Click **Create New Site**
2. To create a new site, you are required to define a user name and password as the primary site administrator. The default name for the account is **siteadmin** but you can enter a different name if you want.
3. Type the paths where you want the default server directories and configuration store to be created. These folders hold information essential to your site. If you'll have multiple machines in your site, enter UNC paths to two shared folders that you've previously prepared. This will allow all machines in the site to see the directories and click **Next**.
4. Examine the details about the site you're going to create. When you're ready to create the site, click **Finish**.

About the ArcGIS Web Adaptor

ArcGIS Web Adaptor allows ArcGIS for Server to integrate with your existing web server. It is compatible with IIS and Java EE servers such as WebSphere and WebLogic.

Benefits of using Web Adaptor:

- Allows you to integrate ArcGIS for Server with your organization's existing web server. By including a web server in your site, you gain the ability to host web applications that use your GIS services.
- Allows you to provide a single endpoint that distributes incoming requests to the GIS servers in your site.
- Allows you to expose your GIS server through your organization's standard website and port. Use the Web Adaptor if you don't want users to see the default port **6080** or the default site name **arcgis**.
- Allows you to block the ArcGIS Server Administrator Directory and ArcGIS Server Manager from the view of external users.
- Allows you to block ArcGIS for Desktop users from establishing administrative or publisher connections to ArcGIS Server.
- Allows you to use your organization's identity store and security policies at the web-tier level.

Configuring Web Adaptor

1. Web Adaptor can be accessible by opening the URL <http://gisserver.domain/arcgis/webadaptor>, choose **ArcGIS for Server** and then **Next**



ArcGIS Web Adaptor

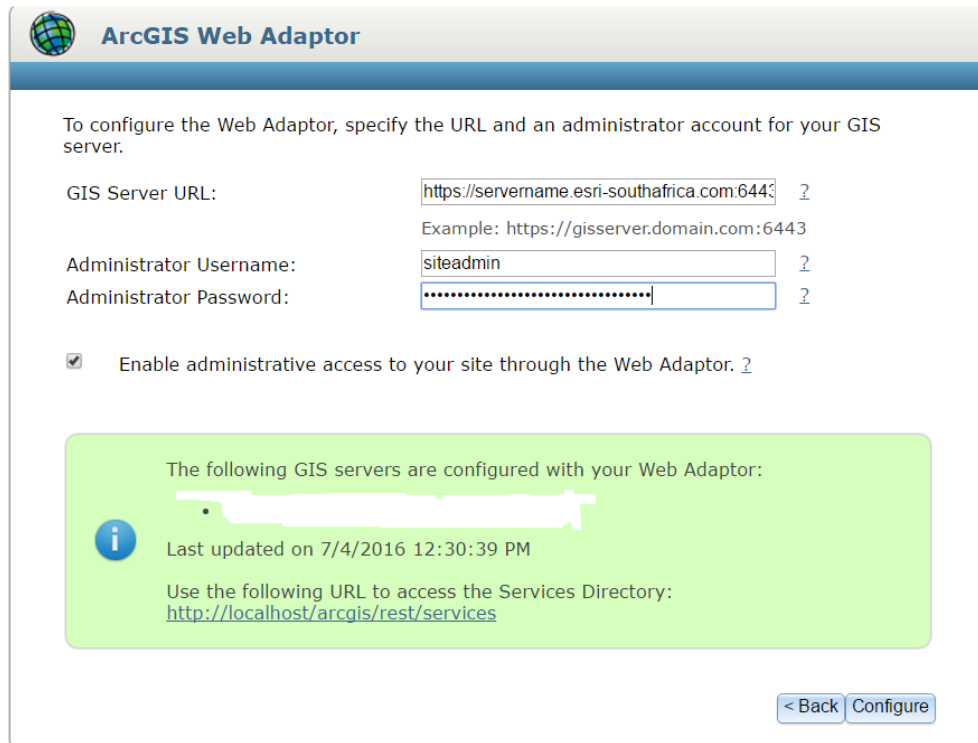
Which product do you want to configure with your Web Adaptor?

- ArcGIS for Server
- Portal for ArcGIS

i A GIS server is configured with your Web Adaptor.
A portal is not configured with your Web Adaptor.

[Next >](#)

2. Enter fully qualified domain name of the computer together with the port (**6443**) and then enter ArcGIS server siteadmin credentials and then click **Configure**



ArcGIS Web Adaptor

To configure the Web Adaptor, specify the URL and an administrator account for your GIS server.

GIS Server URL: [?](#)
Example: https://gisserver.domain.com:6443

Administrator Username: [?](#)

Administrator Password: [?](#)

Enable administrative access to your site through the Web Adaptor. [?](#)

The following GIS servers are configured with your Web Adaptor:

- [Redacted]

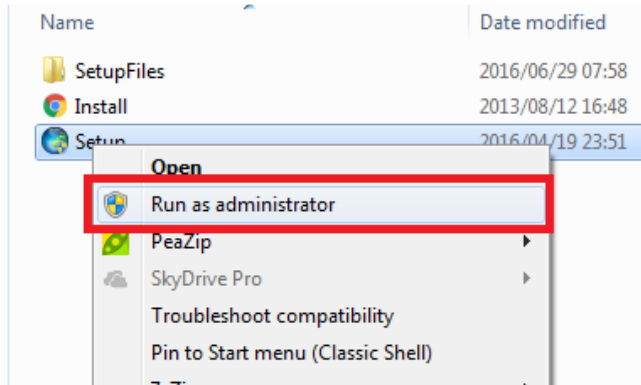
i Last updated on 7/4/2016 12:30:39 PM

Use the following URL to access the Services Directory:
<http://localhost/arcgis/rest/services>

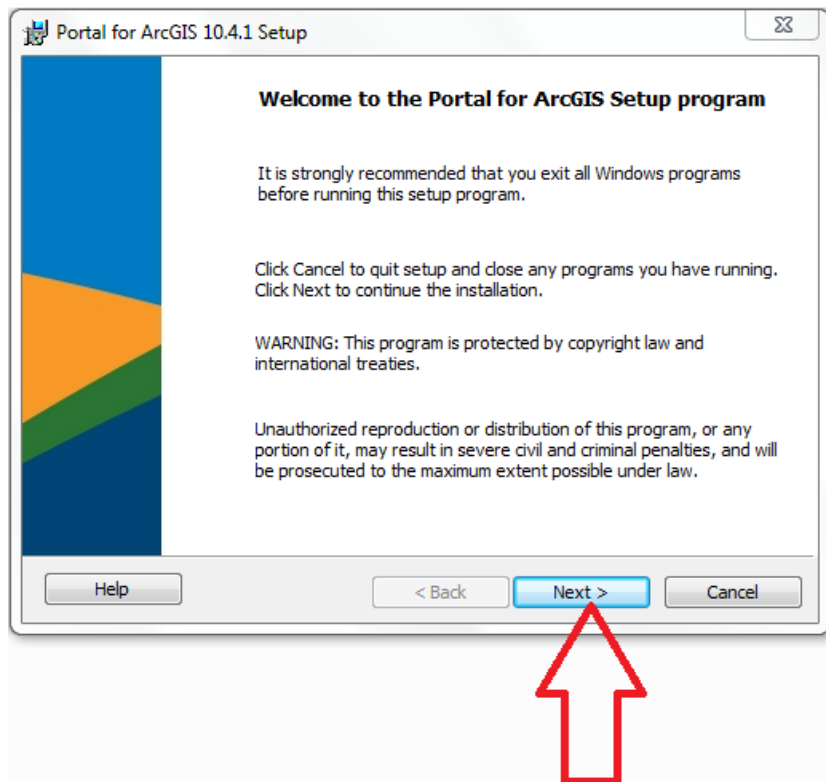
[< Back](#) [Configure](#)

Portal for ArcGIS Installation

1. Open the disk contents to view files and ensure that you run setup with administrative privileges.



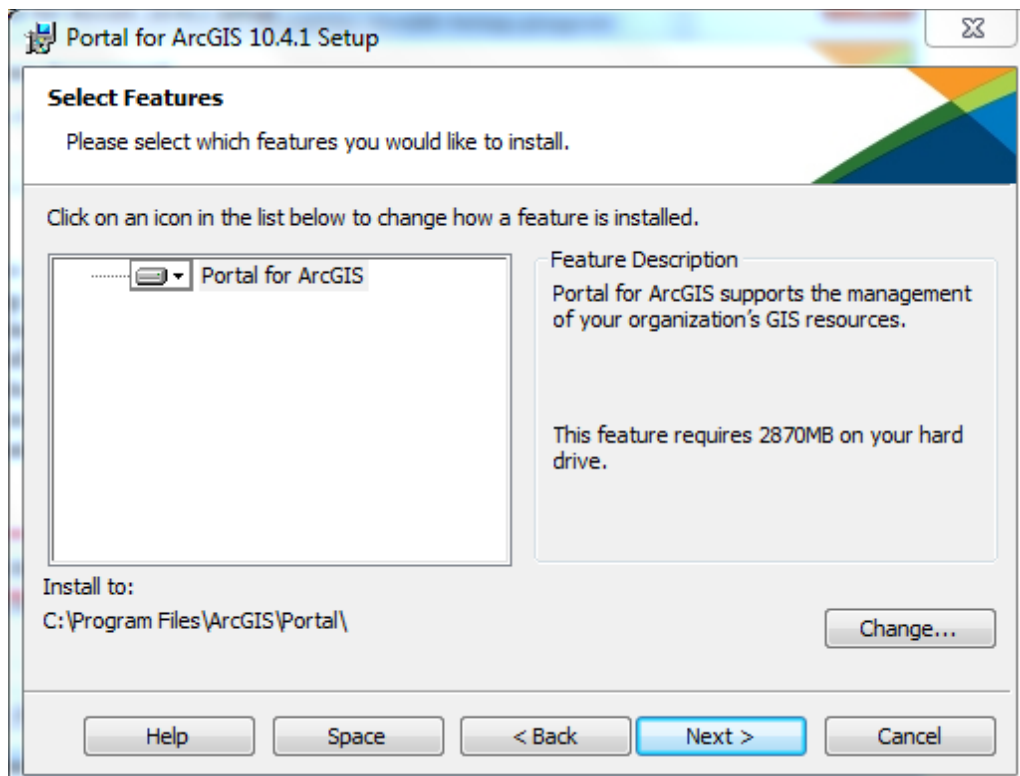
2. Click Next

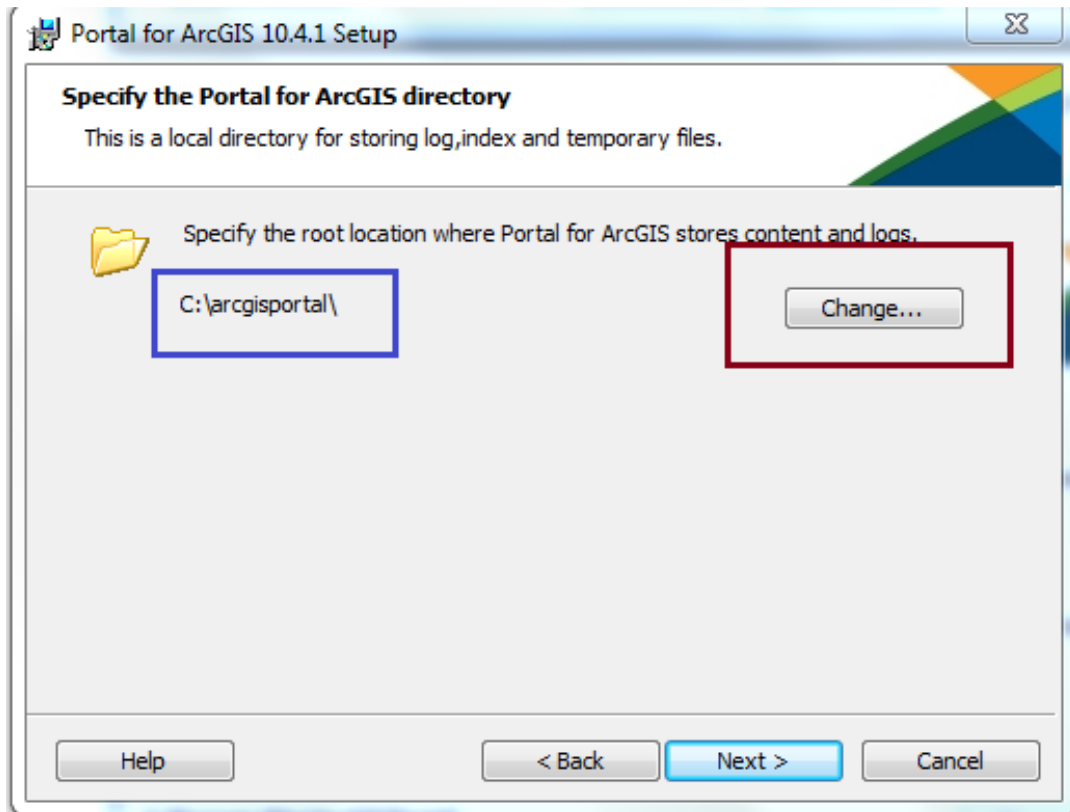


3. Accept license agreement and click **Next**

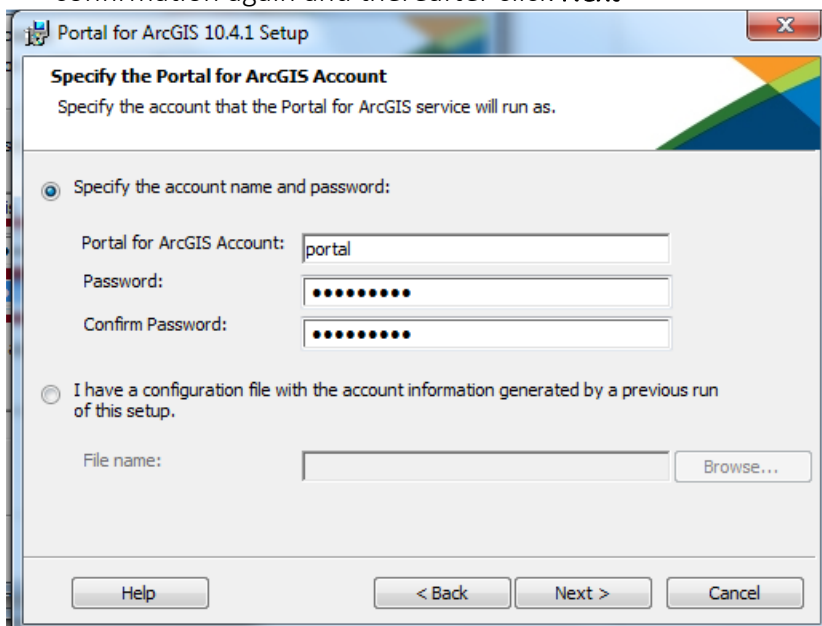


4. Leave default settings on next dialog and click **Next** on two following dialogs (unless you want to change location where the content will be saved)

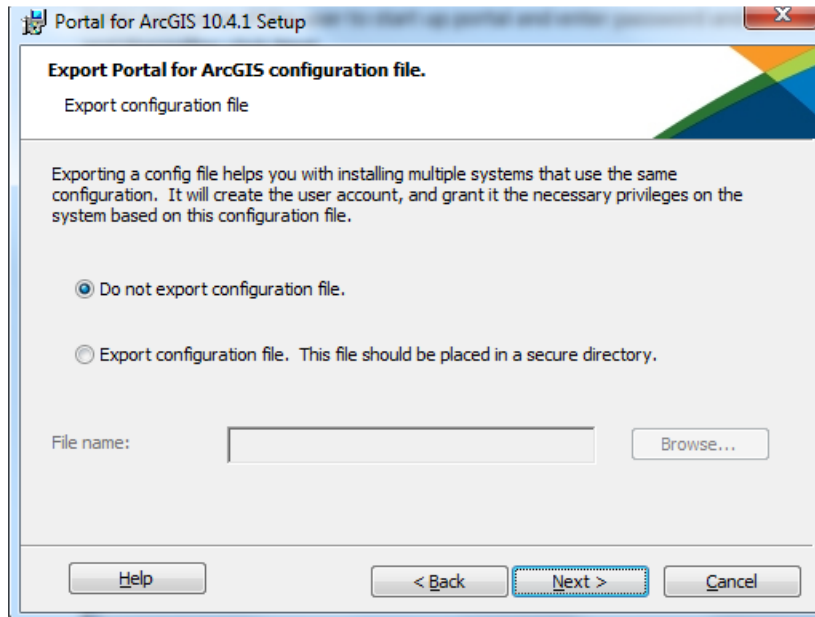




5. Enter username of the user to start up portal and enter password and password confirmation again and thereafter click **Next**



6. Click **Next** on the **Portal for ArcGIS Configuration dialog** and thereafter install to install the application.

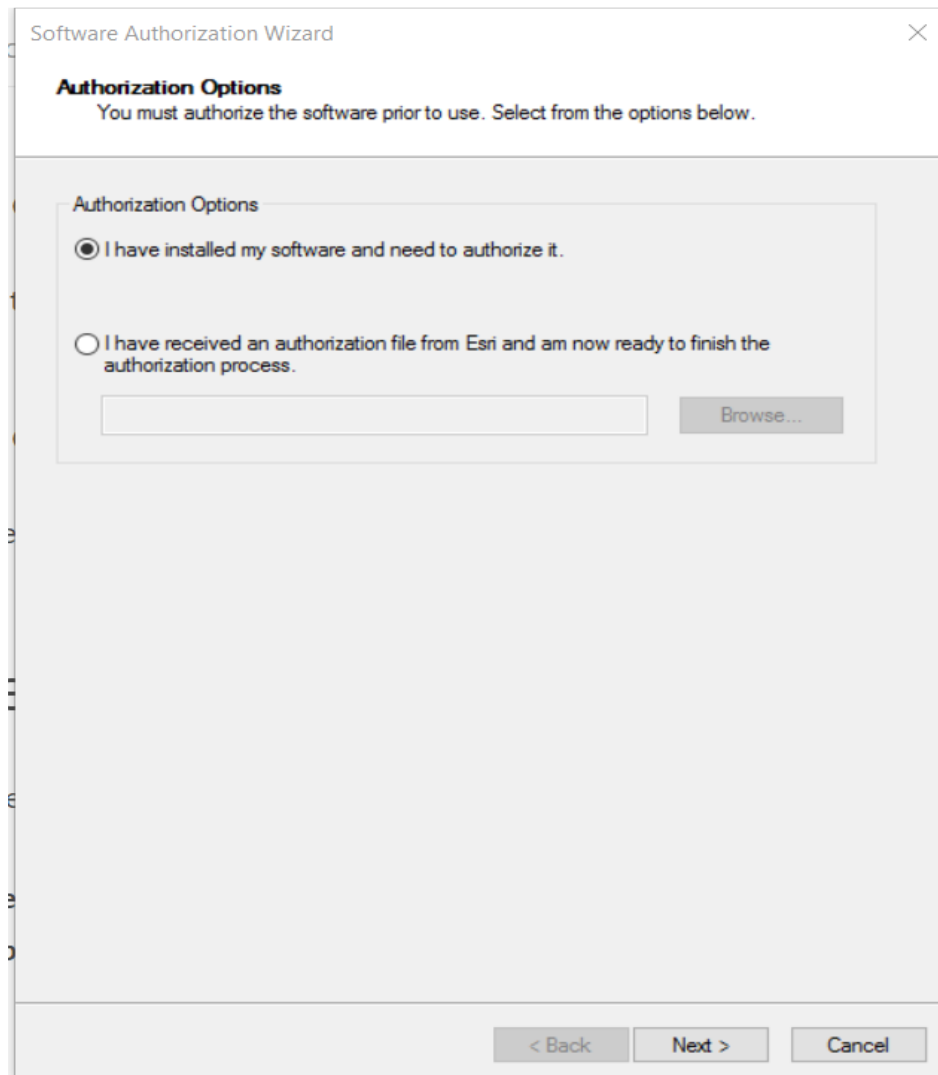


7. Click install

Authorization:

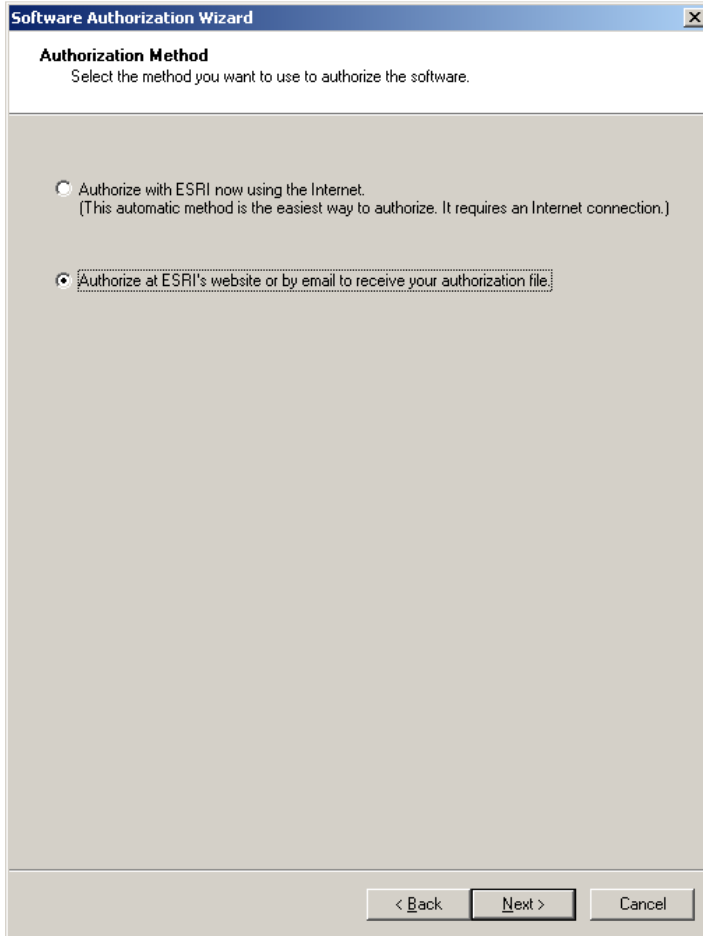
When the installation completes, click **Finish**. The **Software Authorization Wizard** dialog box displays.

1. If the authorization file has been received from the customer care you can choose “**I have received an authorization file from ESRI and now ready to finish the authorization process**”, click **Browse**, select the file and click **Next** to complete the process.



2. **Authorize with Esri now using the Internet** enables you to receive the authorization file immediately. It requires an Internet connection.

3. **Authorize at ESRI's website or by email to receive your authorization file:** Methods allows user to create a text file which can be sent to authorize@esri.com or support@esri-southafrica.com to receive authorization file.



Create a single machine portal

After the Portal for ArcGIS installation completes, you are prompted to create a new portal or join an existing one.

To create a portal, follow these steps.

1. Click **Create New Portal**.
2. On the **Create a New Portal** page, specify the first name, last name, user name, password, email, and identity question and answer of the initial administrator account. The initial administrator account is required to register your portal with ArcGIS Web Adaptor.

Benefits of the Web Adaptor

The Web Adaptor provides the following benefits:

1. Allows you to integrate Portal for ArcGIS with your organization's existing web server. By including a web server in your site, you gain the ability to host web applications that use your GIS services.
2. Allows you to use your organization's identity store and security policies at the web-tier level. For example, if you're using IIS, you can use Integrated Windows Authentication to restrict who enters the portal. You can also use Public Key Infrastructure (PKI) or any other identity store for which the web server has built-in or extensible support. This allows you to provide a single sign-on or other custom authentication experience when logging in to use services, web applications, and Portal for ArcGIS.
3. Allows you to expose Portal for ArcGIS through a site name other than the default **arcgis**.
4. Allows you to expose Portal for ArcGIS through port 80 or 443

Configuring Web Adaptor

Web Adaptor can be accessible by opening the URL <http://gisserver.domain/portal/webadaptor> choose **Portal for ArcGIS** and then **Next**



The screenshot shows the ArcGIS Web Adaptor configuration page. At the top, there is a header with the ArcGIS logo and the text "ArcGIS Web Adaptor". Below the header, the main content area asks "Which product do you want to configure with your Web Adaptor?". There are two radio button options: "ArcGIS for Server" (which is unselected) and "Portal for ArcGIS" (which is selected). Below the options, there is a light green information box containing an information icon and the text: "A GIS server is configured with your Web Adaptor. A portal is not configured with your Web Adaptor." At the bottom right of the form, there is a "Next >" button.

Enter fully qualified domain name of the computer together with the port (**7443**) and then enter ArcGIS server siteadmin credentials and then click **Configure**



ArcGIS Web Adaptor

To configure the Web Adaptor, specify the URL and an administrator account for your Portal.

Portal URL: ?

Example: <https://machine.domain.com:7443>

Administrator Username: ?

Administrator Password: ?

The following portal is successfully configured with your Web Adaptor:



Last updated on 10/21/2016 10:46:00 AM

Use the following URL to access your portal application:
<https://srv-vm-arcgissupport/portal/home>

[< Back](#) [Configure](#)

For any Technical queries during the installation:

Email:

support@esri-southafrica.com

Phone:

+27 11 238 6300

Fax:

+27 11 238 6310

Address:

International Business Gateway,
Cnr New Road & 6th Road,
Midrand

Website:

www.esri-southafrica.com

ArcGIS for Desktop
ArcGIS for Server
Portal for ArcGIS