



Empowering Farmer Support and Agricultural Insights through ArcGIS in Limpopo

Makopoi Nkopane
**Director: Agriculture Geo-spatial Information
Service**



LIMPOPO
PROVINCIAL GOVERNMENT
REPUBLIC OF SOUTH AFRICA

**DEPARTMENT OF
AGRICULTURE AND RURAL DEVELOPMENT**

The heartland of Southern Africa-Development is about people!

Departmental Strategic Priorities 2020/21 – 2024/25



Service Delivery Model

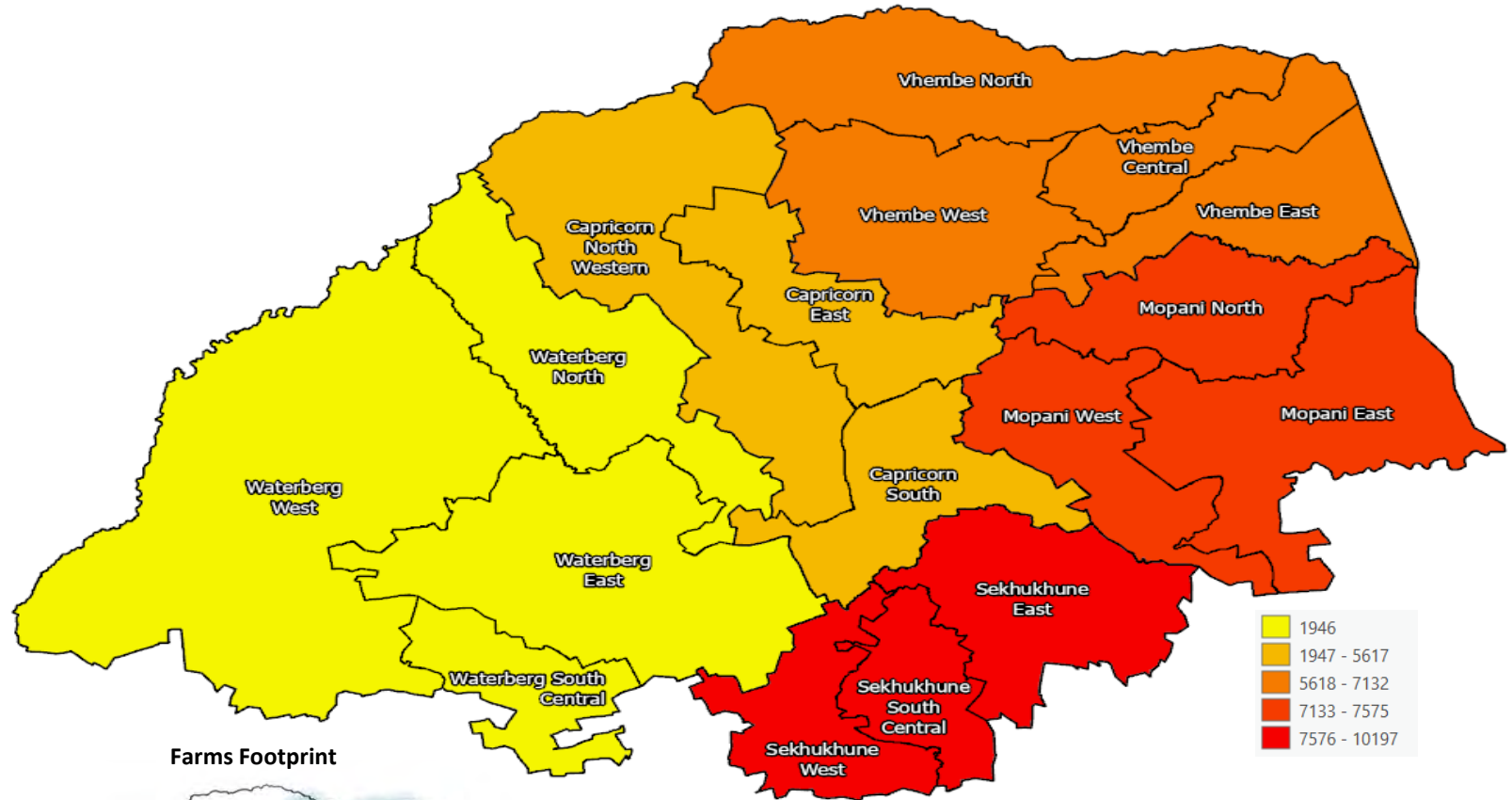
- Improve service delivery with consideration of limited resources;
- Reduce compensation of employees;
- Provide systematic approach in resource allocation;
- Streamline service delivery systems;
- Ease administration and management



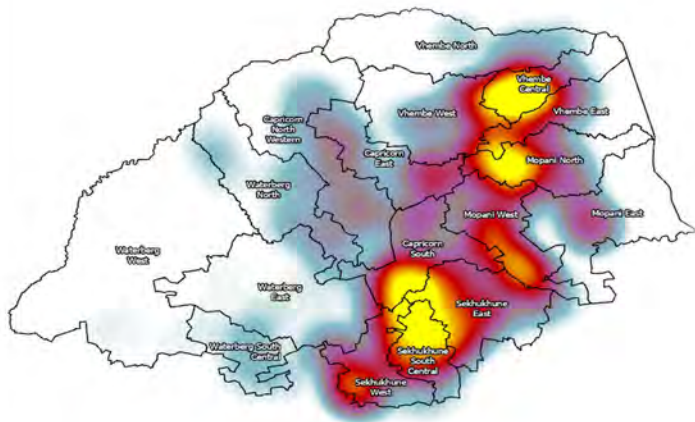
Outcomes

- Increased participation of black producers in the integrated value chain
- Increased primary production
- Increased youth support interventions to contribute towards reduction of youth unemployment

Initial Data Collection



Farms Footprint



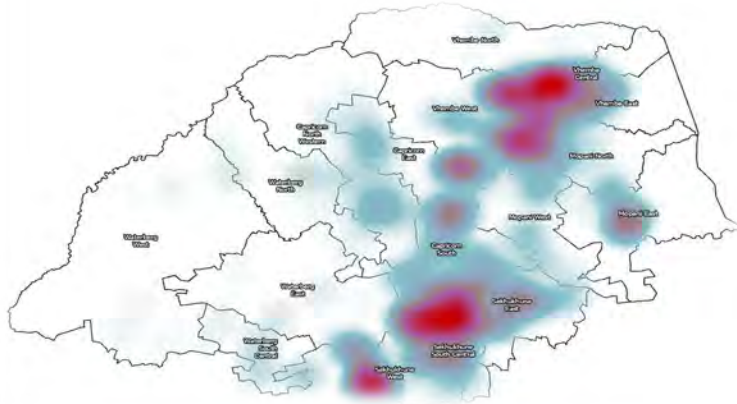
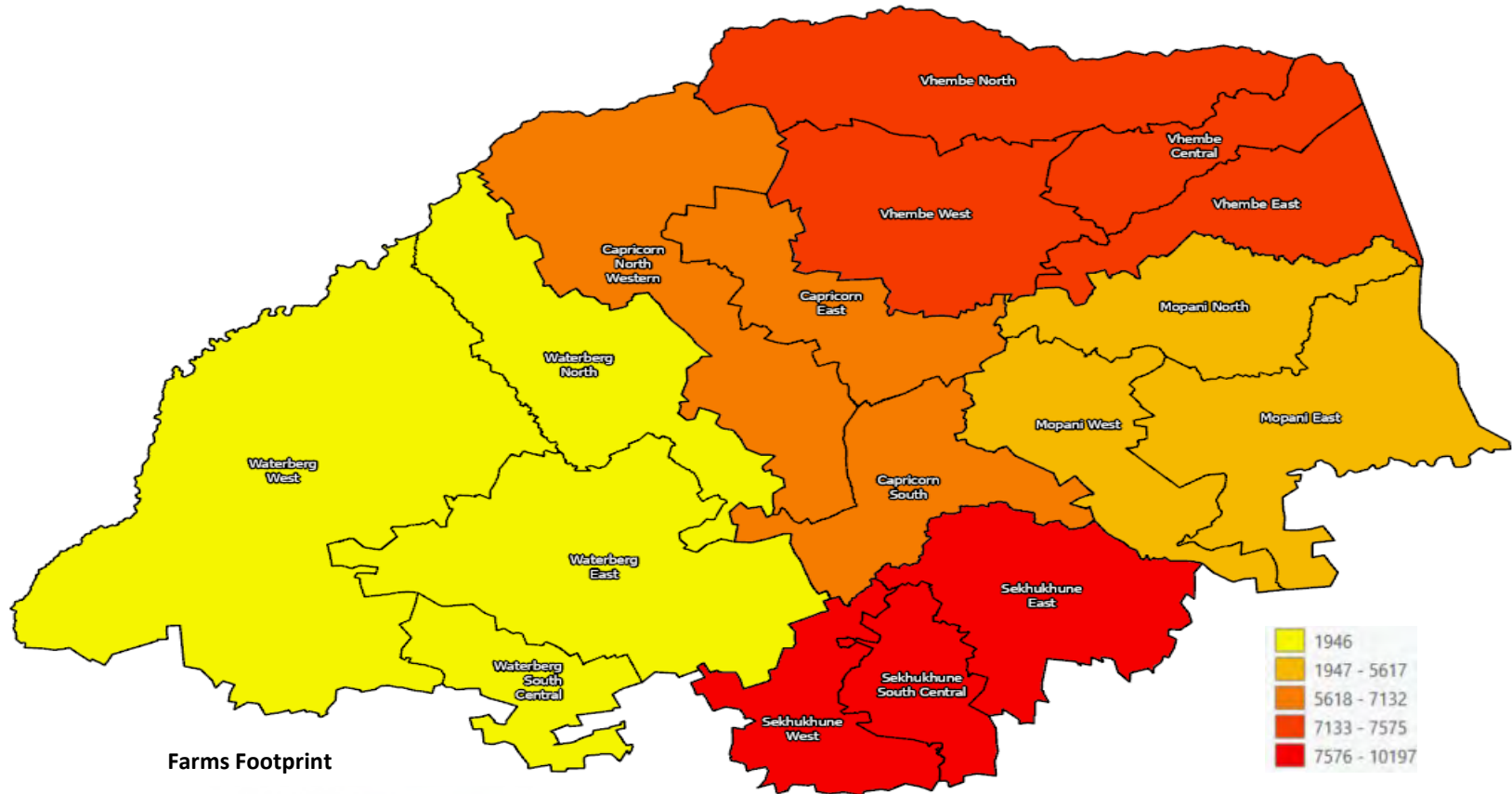
27 128 Farmers Supported
Period : 2010 – 2021
No. of Data Collectors : 750
Collection Tool : Smart Pen

Citizen-centric Approach

The screenshot shows a mobile application interface for 'LDARD Client Contact'. At the top, there is a green header bar with a close button (X), the title 'LDARD Client Contact', and a menu icon (three horizontal lines). Below the header, the app displays the Limpopo Provincial Government logo and the text 'DEPARTMENT OF AGRICULTURE AND RURAL DEVELOPMENT'. A green button labeled 'Farmer Register Nr: Cap_47_abc' is visible. Below this is a green button labeled 'Login'. An orange section titled 'Summary - General Info' contains the following text: 'Officer: MD Pheladi', 'Purpose: Extension Services', 'Production Level: Subsistence', and 'Support: Production Inputs'. Below this is a green button labeled '1. Project Identification'. Under this button, there is a section titled 'Capacity of the Person *' with four radio button options: 'Farm owner' (selected), 'Farm manager', 'Farm worker with Letter of Authority', and 'School Teacher / Principal'. Below this is a text input field for 'Name *' containing the text 'Sangkgoba Esther'. Below the name field is a text input field for 'Surname *'. At the bottom right of the form, there is a checkmark icon.

- Farmer Register as a single source of truth for farmer data
- Digital inclusion via mobile data collection (Survey123)
- Farmers co-sign digital forms (validation of services)
- Feedback loops (dashboards, consultations)
- Transparent and standardised support allocation via Farmer Support Policy

Leveraging ArcGIS - Survey123

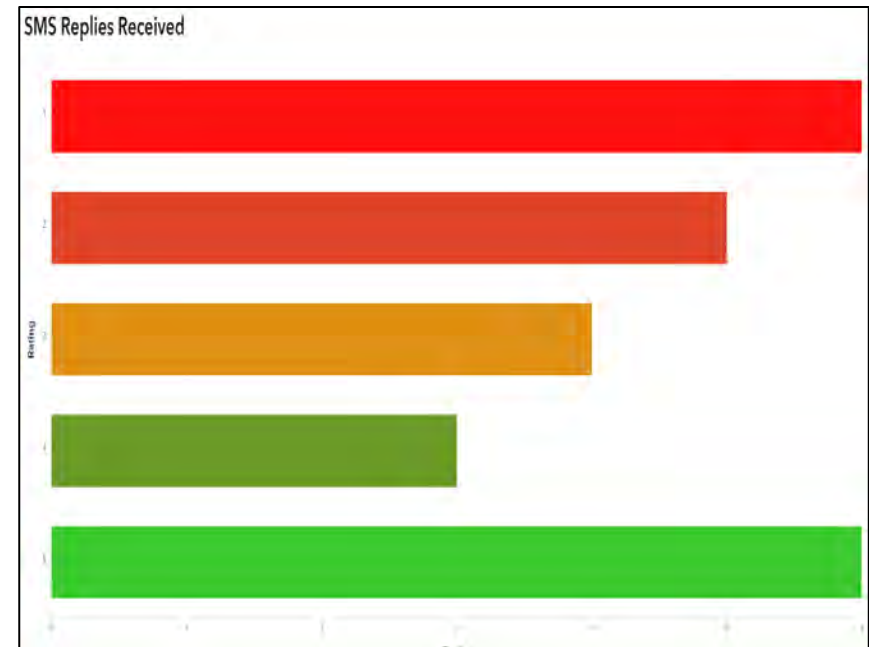
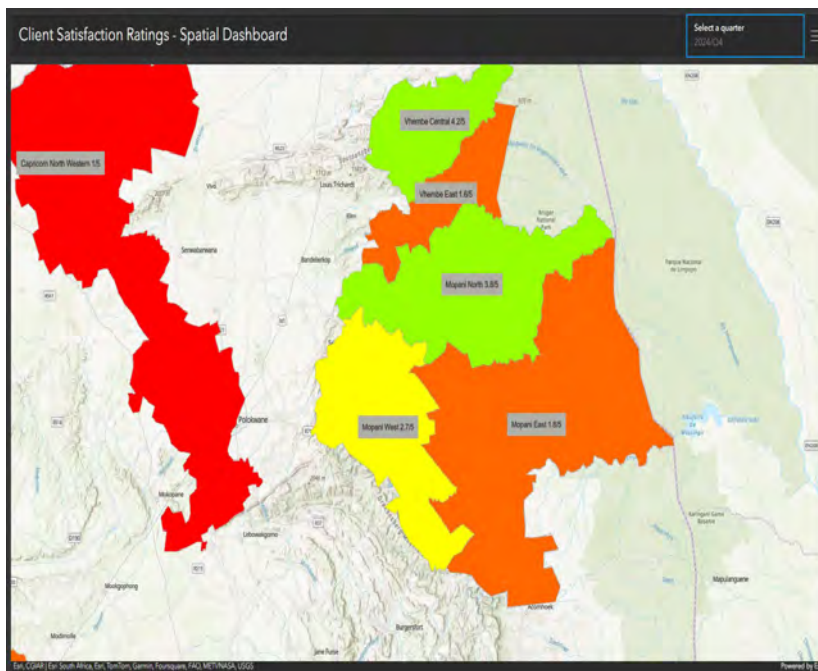


17 573 Farmers Supported
Period : 2022 – 2025
No. of Data Collectors : 300
Collection Tool : Survey 123

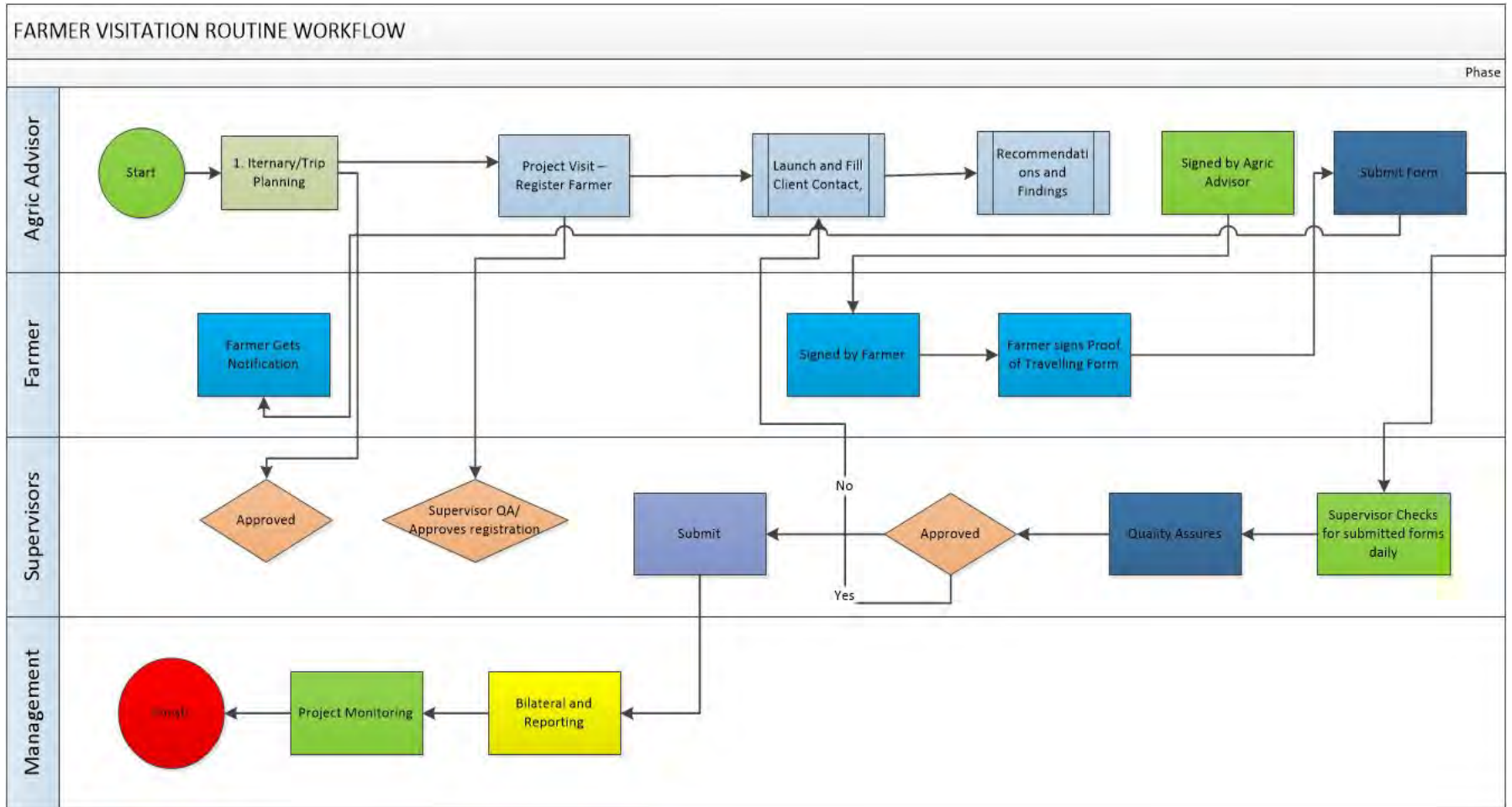
ArcGIS Technology as an enabler

- Survey123: Mobile, offline data collection, GPS-enabled
- ArcGIS Dashboards: Real-time service monitoring
- Integration of services and support: Farmer Register + Client Contact + LandCare + Agribusiness workflows

Client Satisfaction Survey



Integrated Workflow



18.6k Farms



SWANA

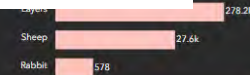
Serve

Selabi-Phile

From Apps to Impact

Livestock

52 Farms Practice Game Farming



Buffalo

56

1.3k

5.7k Farms Practice Horticulture

7.8k Farms Practice Field Crops

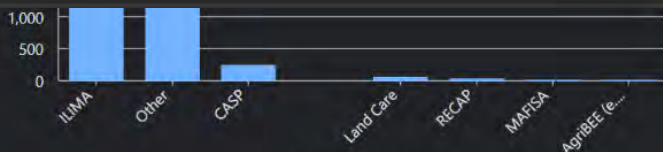
9k Farms Practice Livestock

52 Farms Practice Game Farming



Other

345



Government Support



Outcomes Achieved

- Improved accuracy, reliability, completeness of farmer data
- Over 18 000 farmer records validated
- Faster turnaround time for support, less duplication of services
- Strengthened trust between citizens and LDARD

Performance Dashboard

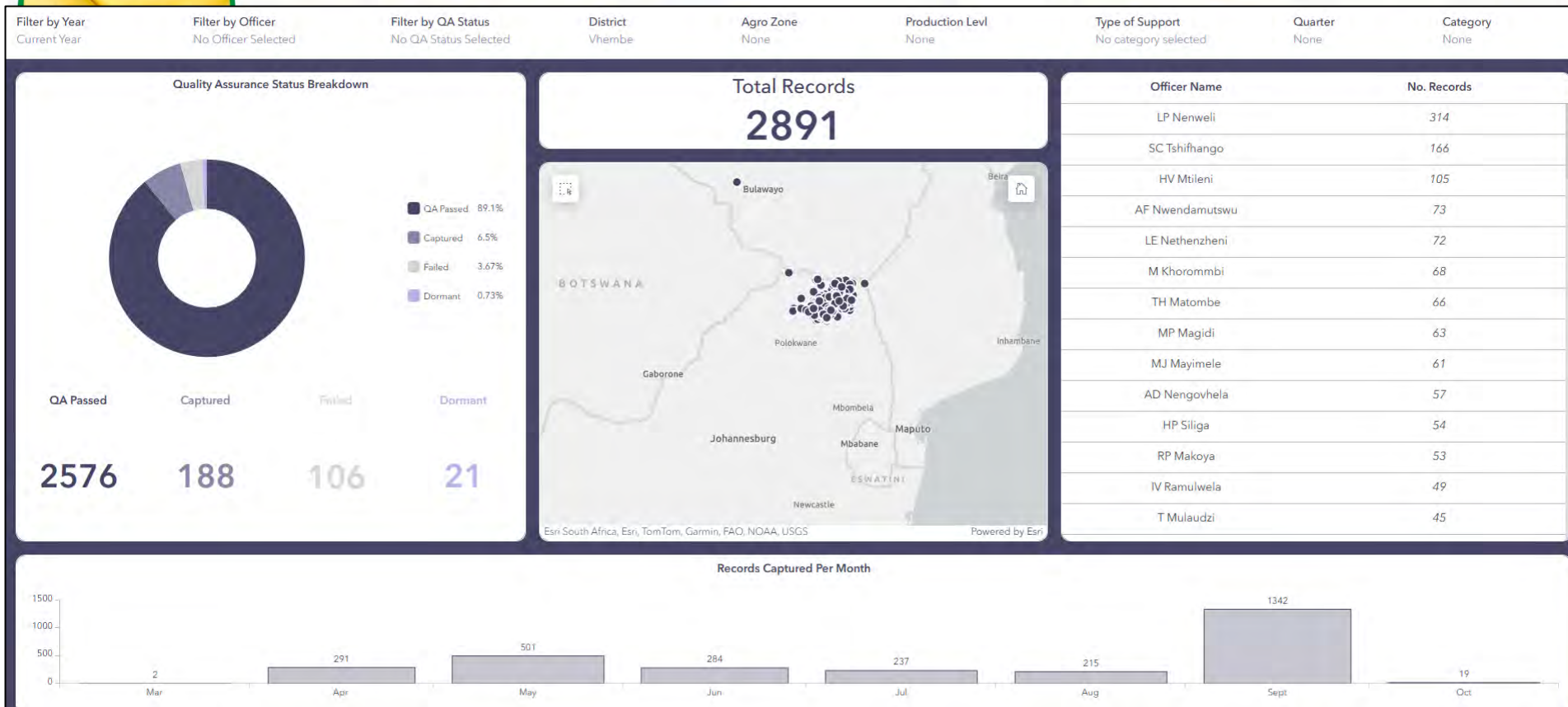


Governance and Accountability

- POPIA compliance: Secure data, role-based access

- Audit-ready reporting embedded in workflows

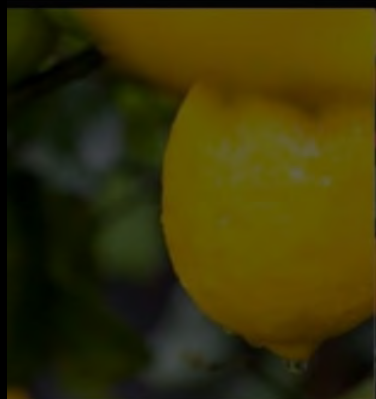
- Transparent adjudication via Farmer Support Policy structures



Conclusion

- Citizen at the centre = Better engagement + Better delivery
- Geospatial tools = Transparency + Accountability + Empowerment
- Together we grow communities, food security, and trust





Thank
You!