

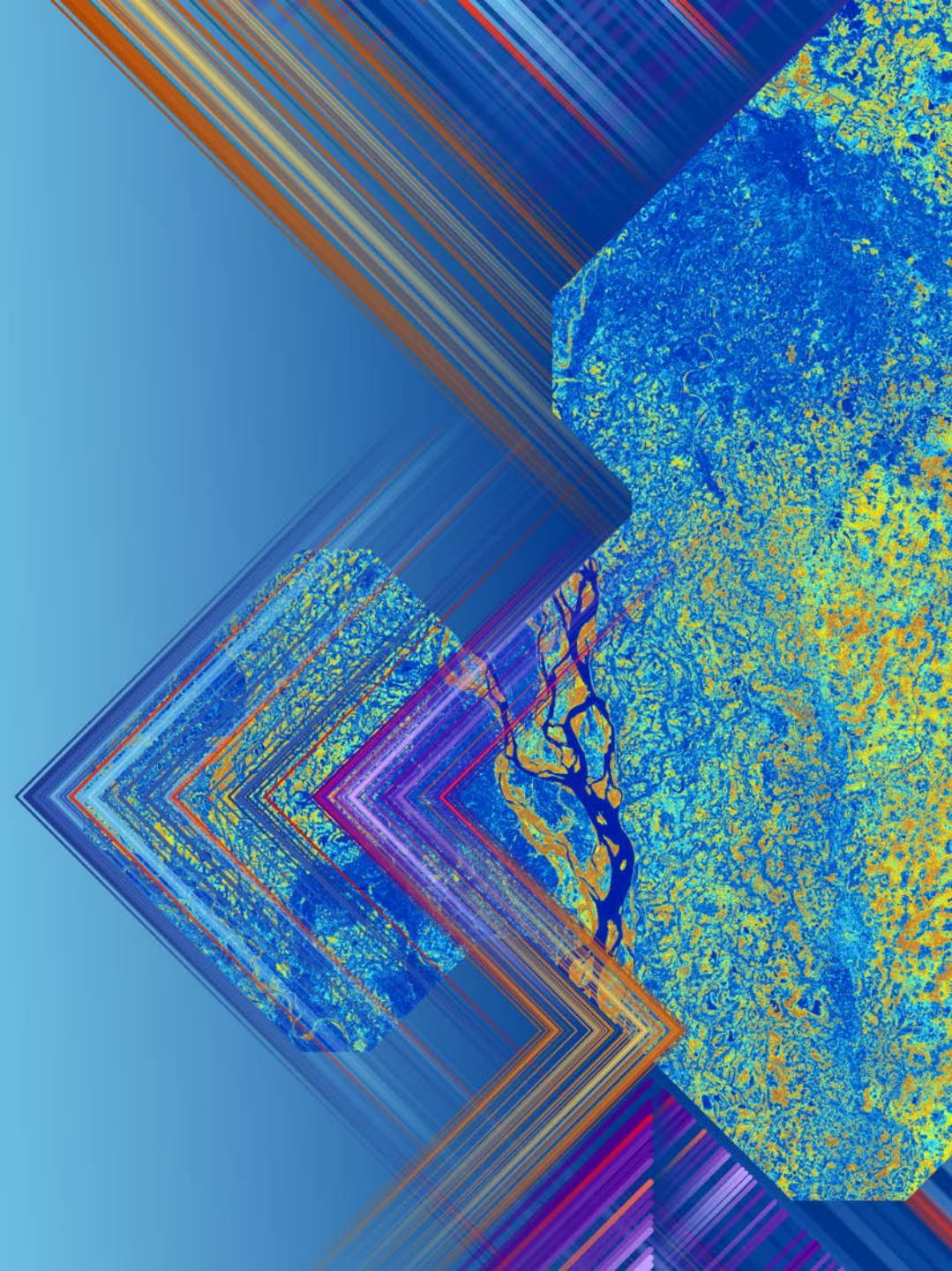


Mining Operation and Resource Distribution

Kenneth Ramashia



SOUTHERN AFRICA ESRI USER CONFERENCE 2025



Introduction

Who is Sibanye-Stillwater?

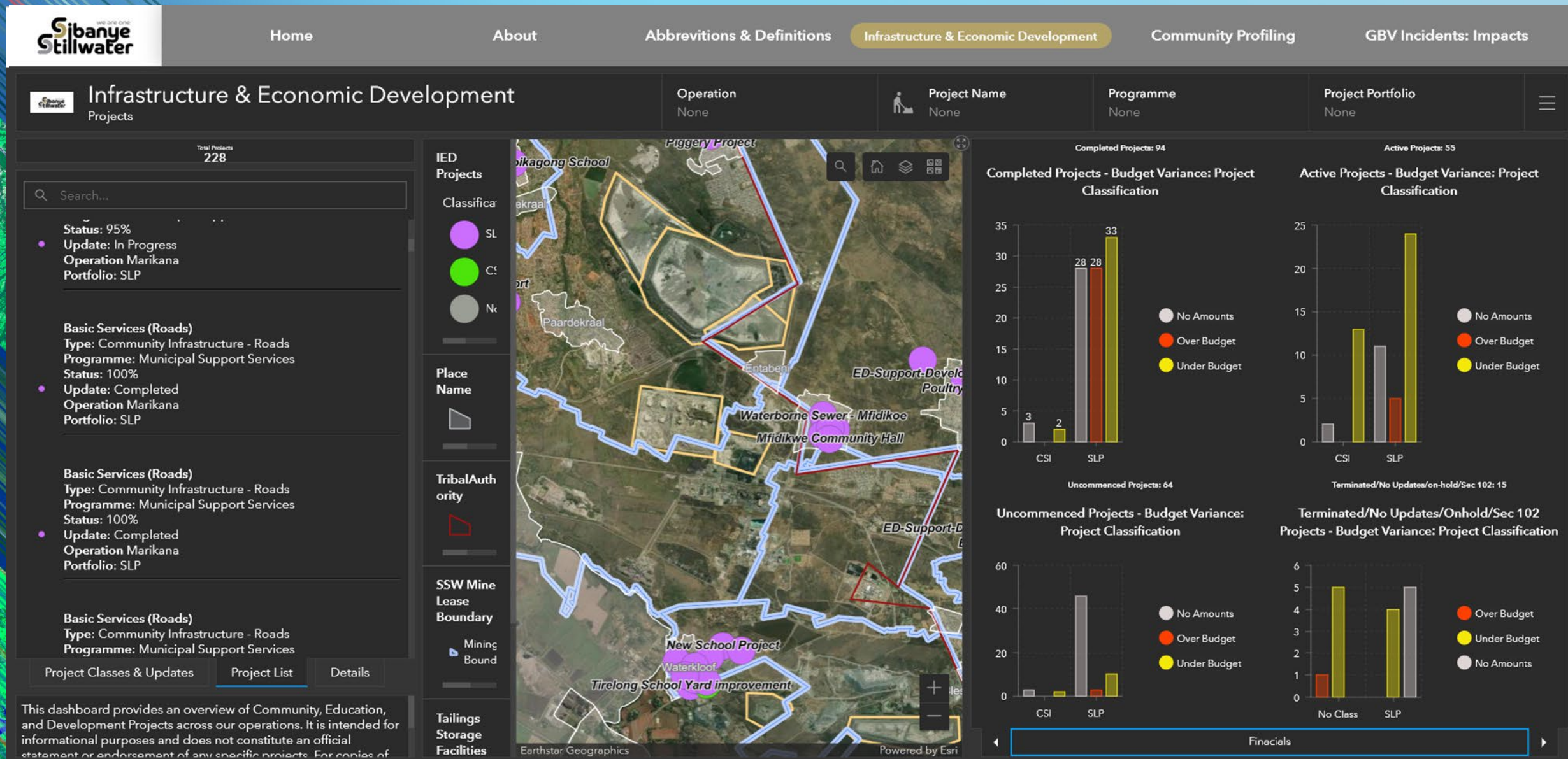
- ❑ A leading international precious metals mining company.
- ❑ **Diverse portfolio** of (Platinum Group Metals) PGM's, gold operations and projects.
- ❑ **World's largest** primary producer of **platinum**.
- ❑ **Second largest** primary producer of **palladium**.
- ❑ **Third largest** producer of **gold**.
- ❑ **Significant producer of rhodium**.
- ❑ **Global leader in recycling and processing** of spent PGM catalytic converter materials.

How do we apply Geography tools in Sustainability?

SSW Mining operation Resource distribution

- Waste & Tailings Storage management
- Infrastructure & Economic Development and Community profiling
- Security management
- Management of Environmental monitoring points
- Underground stopping progression
- Property and surface infrastructure management, etc

Infrastructure & Economic Development



Community Profiling



Community Profiling

[Home](#)[About](#)[Abbrevitions & Definitions](#)[Infrastructure & Economic Development](#)[Community Profiling](#)[GBV Incidents: Impacts](#)

Community Profiling

Operation

Marikana Operation

Sub places

None

Mine Assets
3,129Assets:
Community

IED Projects

- SLP
- CSI
- No Class

Dermacation

SubPlaces 2021: ZOI

- Burnstone Operation
- Driefontein Operation
- Rustenburg Operation
- Kloof Operation
- Kroondal Operation

This dashboard offers insights into the areas of impact on neighboring towns/villages in proximity to our mining operations. While every effort has



Earthstar Geographics

Powered by Esri

All Facilities

Search...

Type: Educational Facility

Description: ECD

Name: GREAT HEIGHTS

Coordinates: 27.26;-25.60

Type: Educational Facility

Description: ECD

Name: LITTLE PRETTY ANGELS DAY CARE CENTER

Coordinates: 27.26;-25.61

Type: Educational Facility

Description: ECD

Name: LITTLE PRETTY ANGELS DAY CARE CENTER

Coordinates: 27.26;-25.61

Type: Educational Facility

Description: ECD

All Facilities

FacilityType	FacilityDescription	FacilityName	X	Y
Educational Facility	ECD	GREAT HEIGHTS	27.26	-25.60
Educational Facility	ECD	LITTLE PRETTY A...	27.26	-25.61
Educational Facility	ECD	LITTLE PRETTY A...	27.26	-25.61
Educational Facility	ECD	LUZUKO EDUCA...	27.26	-25.60
Educational Facility	ECD	WORLD OF WO...	27.26	-25.60
Educational Facility	ECD	BOITUMELO DA...	27.27	-25.62
Educational Facility	ECD	DOLPHIN EDUC...	27.28	-25.63
Educational Facility	ECD	GOOD SHEPHE...	27.27	-25.62
Educational Facility	ECD	JOY & PEACE PR...	27.27	-25.63
Educational Facility	ECD	LEFENTSE DAY ...	27.28	-25.63
Educational Facility	ECD	LITTLE ANGEL E...	27.28	-25.63
Educational Facility	ECD	LITTLE ANGEL E...	27.28	-25.63
Educational Facility	ECD	LITTLE ANGEL E...	27.28	-25.63
Educational Facility	ECD	MAMA HILDA D...	27.29	-25.63
Educational Facility	ECD	MILES OF SMILE...	27.28	-25.63
Educational Facility	ECD	QUIVER OF ARR...	27.28	-25.63
Educational Facility	ECD	QUIVER OF ARR...	27.28	-25.63
Educational Facility	ECD	QUIVER OF ARR...	27.28	-25.63
Educational Facility	ECD	SEIMI PLATINU...	27.28	-25.63
Educational Facility	ECD	THANYA INSTIT...	27.28	-25.63
Educational Facility	ECD	THANYA INSTIT...	27.28	-25.63

Map

ownership details

Ownership table

Facility details

Demographics

Standards1

Standards2

Proximity

Facilities list -coord

Info Page

Community Support

0

Cultural Sites

4

Education

79

Health

6

Lighting Infrastructure

0

Public Structures

6

Recreational

0

Liquor Outlets

0

Religious Places

27

Key takeaways

Geography is the foundation of sustainability because:

- It helps us understand the relationship between people, places and the environment
 - We learn how natural resources are distributed
 - What human activities (anthropogenic) affect ecosystem
 - How to plan for a balanced future
-
- Geography provides digital tools and knowledge to create a sustainable world

The background features a dark blue field with four large, overlapping diamond shapes. Each diamond is composed of numerous thin, parallel lines in various colors including purple, blue, green, red, and orange, creating a complex, layered geometric pattern.

Thank you



**SOUTHERN AFRICA
ESRI USER CONFERENCE
2025**