

Building Future-Ready Geospatial Professionals Through Continuous Learning

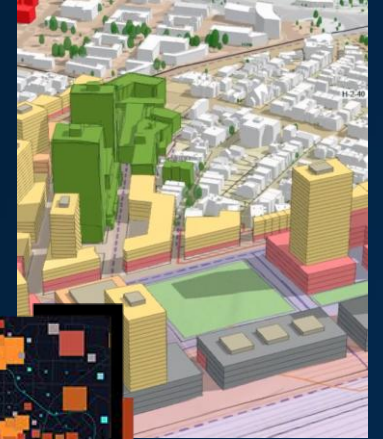
Mokhine Maake (Education Manager)



SOUTHERN AFRICA ESRI USER CONFERENCE 2025

GIS Is Evolving

- From Desktop to Cloud and Web GIS
- From printed maps to Web maps, dashboards and other apps
- Integration of AI and Machine Learning
- Mobile and Real-Time GIS
- 3D and Digital Twins



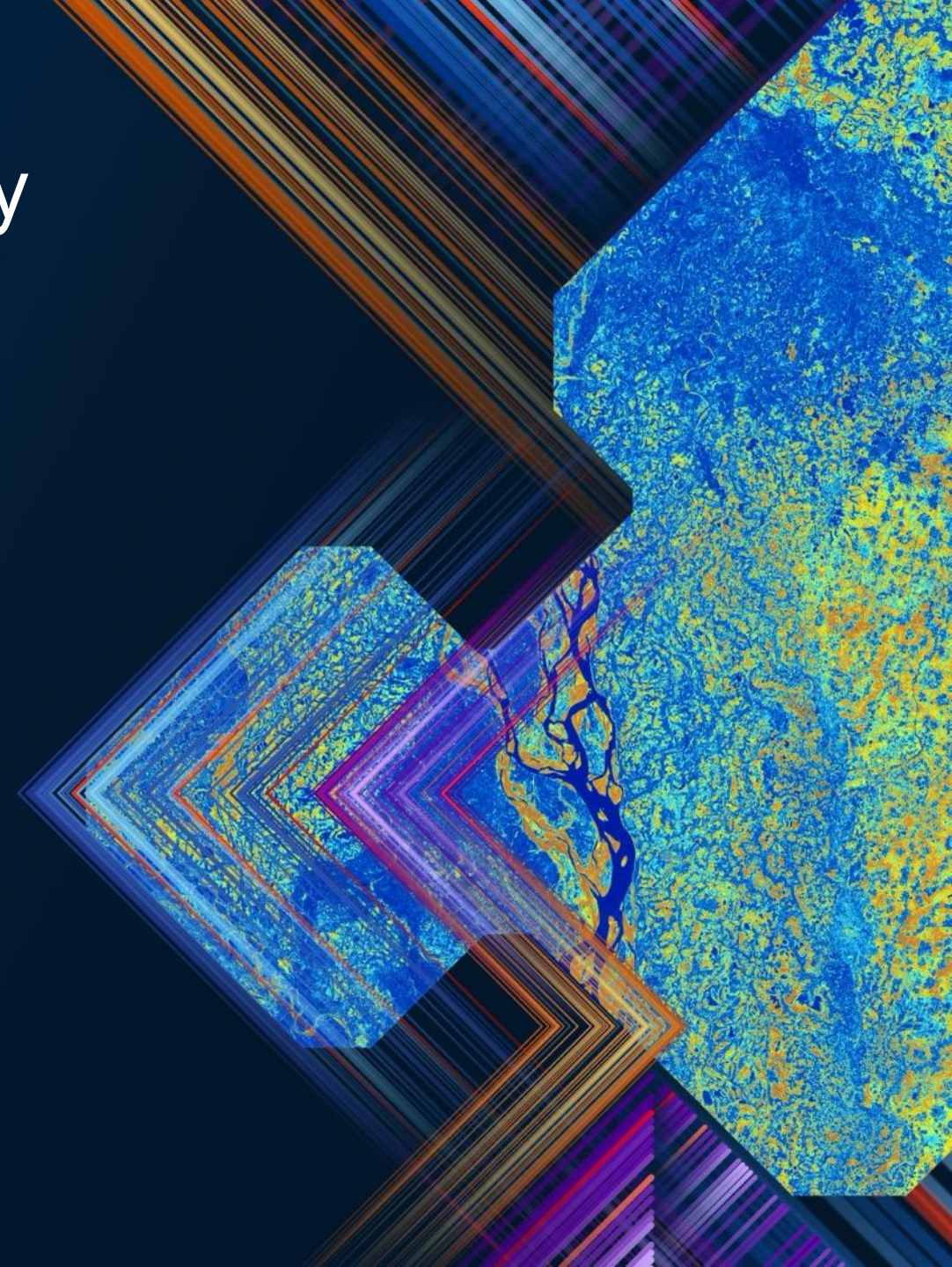
Why AI Matters to Geospatial Professionals

- Automating Repetitive Geospatial Tasks
- Turning Big Spatial Data into Insights
- Enhancing Decision-Making
- Improving Accuracy and Precision
- Driving the need for continuous learning in GIS



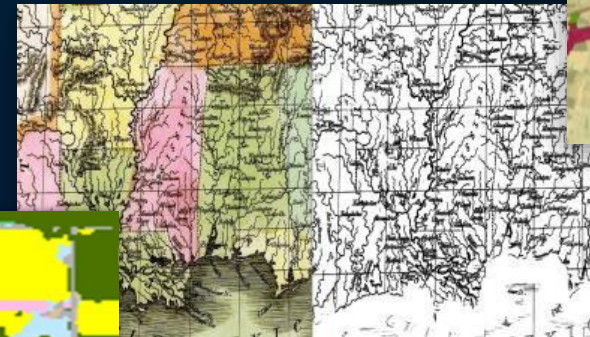
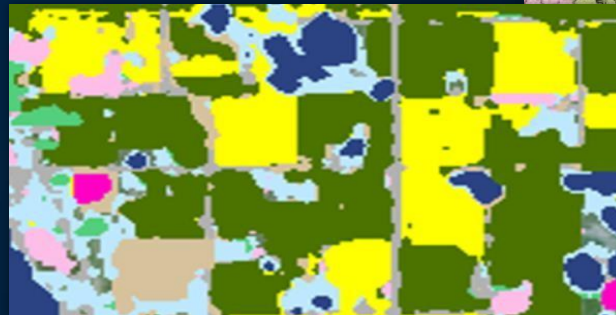
Using AI Effectively and Ethically

- To use AI responsibly, geospatial professionals must:
 - Understand what AI is — and what it isn't
 - Uphold ethics and professional responsibility
 - Ensure data quality and governance
 - Maintain technical competence
 - Commit to continuous professional growth



The Duty of a Geospatial Professional

- AI should not compromise ethical duty to the public or the environment
- Registration with SAGC ensures competence, integrity, and public accountability
- Professionals must ensure:
 - Accuracy
 - Public safety
 - Transparency and professional judgement



What Does It Mean to Be Professionally Registered?

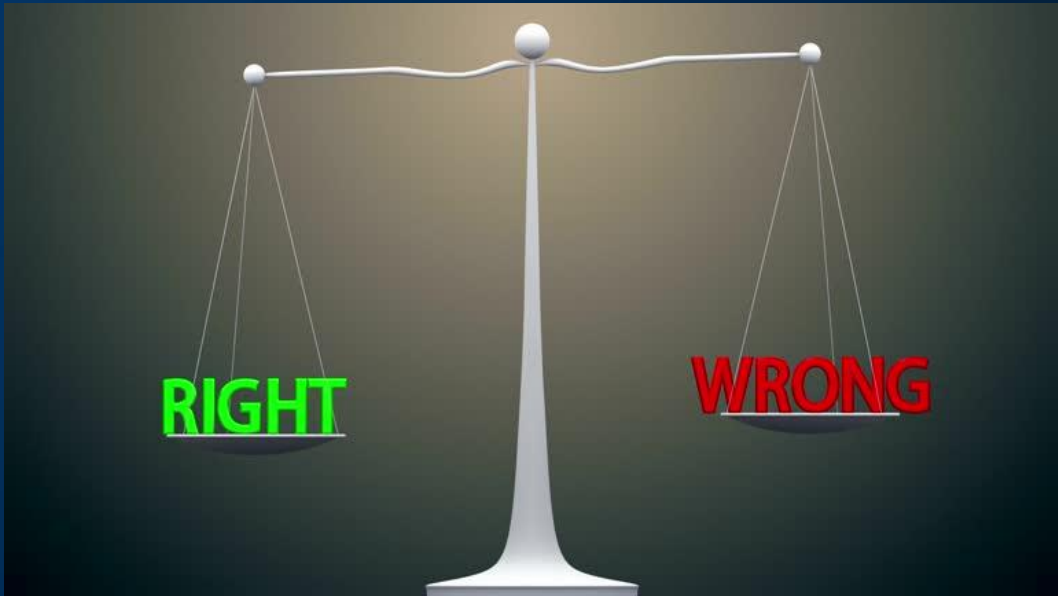
- Recognition as a competent and ethical GIS professional
- Adherence to professional standards and a code of conduct
- Demonstrated application of knowledge — not just qualification.

The Purpose of Professional Registration

- Ensures competence and accountability
- Strengthens credibility of the GIS profession
- Establishes legal and ethical responsibility
- Promotes continuous professional development
- Enhances career recognition and advancement

Ethics and Professionalism

- Ethics: Doing what is right — guided by conscience and code of conduct
- Professionalism: Doing it well and responsibly, within accepted standards
- Governed by the SAGC Code of Conduct



Continuous Professional Development (CPD)

- The geospatial industry is constantly evolving
- Maintain your CPD through:
 - Training, seminars, and workshops
 - Mentorship and coaching
 - eLearning and applied practice
- CPD ensures professionals remain competent



The Role of Esri South Africa College

- Provides an accredited Diploma in Geoinformation Science and Technology aligned with SAGC standards
- Modules are composed of theory and practical components
- Candidates can enroll for qualification/non-qualification purposes towards professional registration
- Builds technical, ethical, and analytical skills for professional registration
- Connects academic learning with professional practice and readiness



Driving Change: GIS Education by the Numbers



Average Trained Delegates



Unemployed Youth



WE TRAIN
OVER 200
UNEMPLOYED
YOUTH
EVERY YEAR



Conclusion

- GIS is evolving — from desktop tools to cloud, web, and AI-driven platforms.
- AI enhances our capabilities but does not replace professional judgement.
- Ethics, accountability, and continuous learning remain central to our profession.
- Professional registration (SAGC) ensures competence, credibility, and responsibility.
- Esri South Africa College supports this journey through accredited training



**SOUTHERN AFRICA
ESRI USER CONFERENCE
2025**